

Examples of MGBGTV8 Commission No plates – photos from members



000110 - Mike Breedon – Blaze 0115 – VRN: HOH 904L



000119 - Mike Dunlop – Limeflower 0118 – VRN: HOH 901L



000148 - Malcolm Venables – Teal Blue 0183 – VRN: ULU 800M



000197 - Gavin Bailey - Glacier White 0199 – VRN: CUY 944N



000173 - Peter Berry – Teal Blue 0201 – VRN: VEA 191M

Examples of MGBGTV8 Commission No plates – photos from members



000414 - Peter Beadle – Damask 0503 – VRN: OKC 315M



000401 - Mike Russell - Damask 0505 – VRN: NDG 111M



001267 - Mike Breedon – Blaze 0796 – VRN: TAN 926M



001298 - Victor Smith - Harvest Gold 1089 – VRN: PVJ 414M



001487 - Martin Ashby - Bracken 1346 – VRN: PWG 127M

Examples of MGBGTV8 Commission No plates – photos from members



001517 - Mike Breedon – Teal Blue 1753 – VRN: HFC 17N



001983 - Keith Belcher – Damask 1948 – VRN: FOM 7L



002084 - Richard Withington - Glacier White 2197 – VRN: JMX 380N

Position of the engraved numbers on the Commission No plate



All the examples of Commission No plates we have seen do have broadly similar misalignment features:

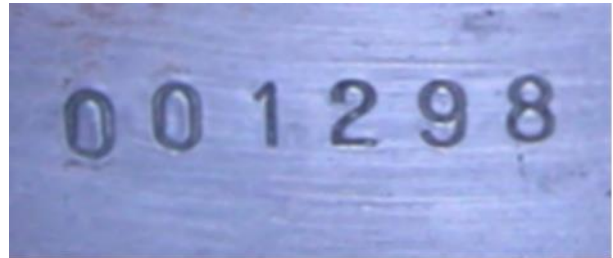
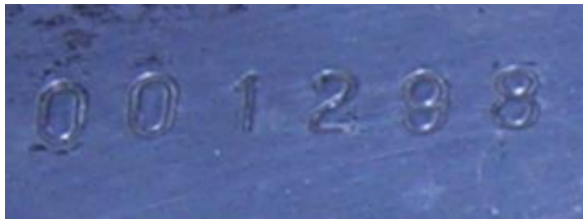
- **Very early cars** had a simple plate and the numbers seemed to have been punched almost in a casual way.
- **First zero of the Commission number** – the underside of the stamping of that zero is slightly above the horizontal line through the base of the **G.75D.** prefix. Also the lefthand side of the first zero lines up vertically with the righthand side of **first M** in “COMMISSION”.
- **Second zero of the Commission number** – the underside of that zero is slightly above that of the first zero.
- **Third & fourth numerals** - (1 and 2 in the case above) are very nearly on the same horizontal line as the second zero.
- **Fifth & sixth numerals** – the fifth (9 above) is very slightly lower and the sixth (8 above) very slightly higher.

Examples of MGBGTV8 Commission No plates – photos from members

Looking at the detail of the number

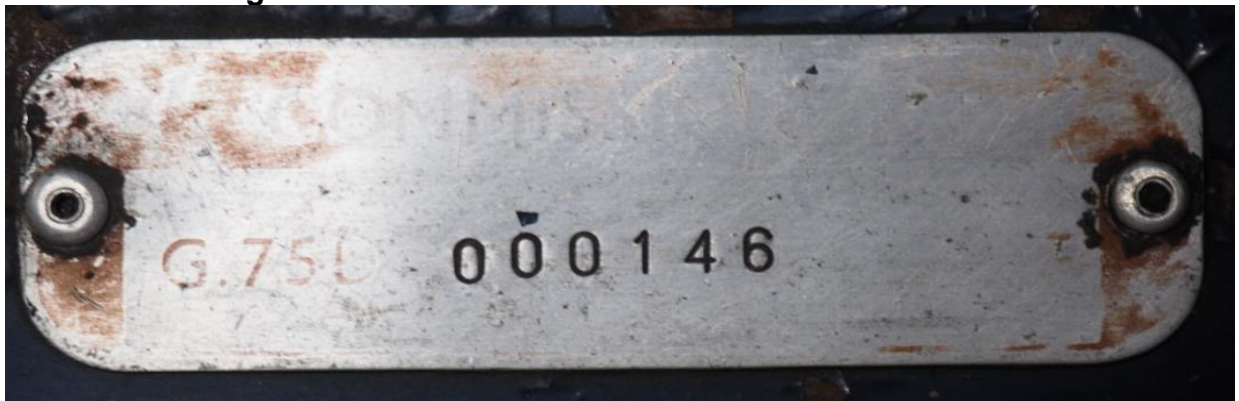


Seen from an angle the Commission number is stamped into the metal plate but when viewed from above the number appears a dark colour – probably muck accumulating when cleaning and polishing the slam panel.



The engraved numbers can appear “black” from this angle.

Black numbering



Another example of what appears to be a “black” Commission No.

