



# PROFILE ON NO

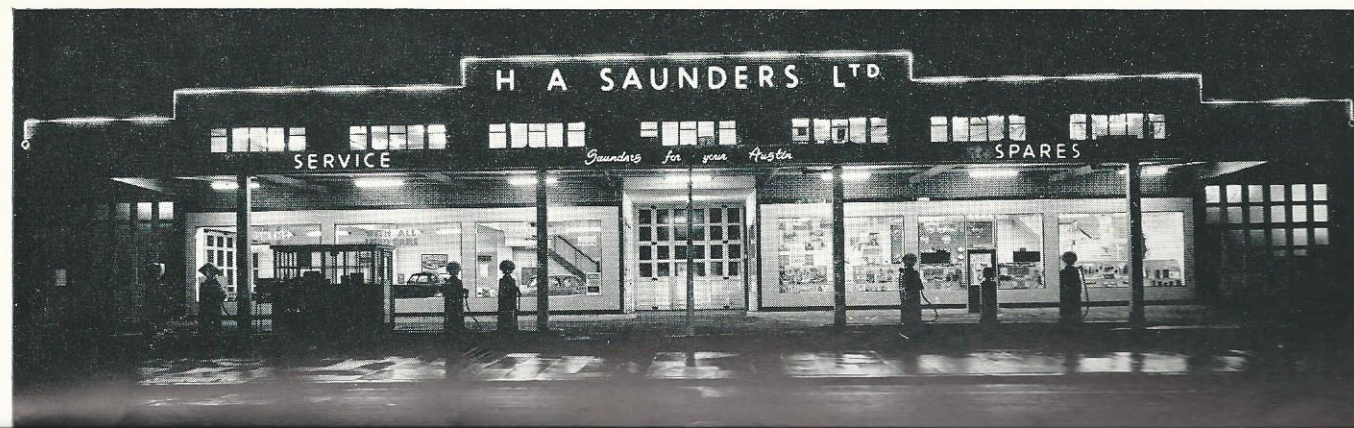
## OUR ROVING REPORTER



**Above** Exterior of H. A. Saunders, Austin House, High Road, North Finchley, belies its actual interior size. Inside there are no-less-than 10,000 square feet, making it by far the largest showroom in the Group.

**Right** This picture, taken a few years ago, gives a good idea of the feeling of 'space' at Austin House. This is a view looking from the rear of the showroom toward the High Road window.

**Below** Undergoing modernisation and re-decoration are our premises at High Road, Whetstone. A new showroom is to be included here, and the pumps removed.



### 10,000 of Sh

Stepp  
Finchley p  
nearest sal  
or since ha  
showroom  
many cars

There's  
was the head  
Such an impr  
Mann Egert  
the takeover  
headquarters  
have they th  
occupies 10,  
personnel too

Cars they  
a week—from  
area outside.  
comparatively  
the showroom  
number of cars

In a year,  
cars. As distr  
from BLMC o  
quite tremenda  
over—around  
parts turnover.

Competit  
Regional Man  
is "keen but c  
people in the H  
of the vehicle  
Another intere  
"the Smoke"—  
techniques. A  
of the world is  
is a good, fair  
neighbouring  
good deal. It  
elsewhere."

Finchley's  
at 1085-1095 H  
time of my visi  
But it has mea  
forecourt. W  
"The pumps,  
were worth.  
for service and  
of the build-up  
the effect of pu  
cars serviced c  
sell a tremend

The work  
of the premises  
be sold from  
re-designed to  
impression.