



BY PASSIONATE DRIVERS FOR PASSIONATE DRIVERS

Remember opposite lock? Enjoy the ZT and ZT-TV8. Two cars designed with a passion for performance and engineered and built to answer the needs of true driving obsessives. If you're planning to exploit the car's ultimate performance you'd best head to the Autobahns, top speed is electronically limited to 155 mph, while elsewhere you'll love the fact that one gear change and a mere 6.2 seconds from rest you've arrived at 60 mph. The train-like pull from the big V8 provides breathtaking in-gear acceleration, making the car deceptively easy to drive and devastatingly quick across country.

Revel in the seamless response of the car's finely balanced chassis to the enormous torque of the 4.6 Litre V8. It's not for the faint-hearted.



But there's more, much more to this car than just a muscular V8 engine. The chassis has been completely re-engineered. The new multi-link rear axle has been designed to work seamlessly with the Hydratrak limited slip differential to provide entertainment unlimited, ensuring perfect balance at all times. And yet more delight from the bespoke steering system, designed in conjunction with the new McPherson Strut front suspension, to provide the ultimate in steering feedback.

The unique low depression intake system which feeds the power unit its essential oxygen and the low loss exhaust system, whose four tailpipes, purposefully shrouded below race-inspired bumper heatshields, hint at the car's awesome potential.

The new MG ZT and ZTT V8 range. By passionate drivers, for passionate drivers from only £27,995.

PRICING

	CO ₂ g/km	List Price	VAT	Published Retail Price	VED	First Reg. Fee	OTR Price
ZT 260 V8	314	£23,668.08	£4,141.91	£27,810.00	£160.00	£25.00	£27,995.00
ZT 260 V8 SE	314	£27,714.89	£4,850.11	£32,565.00	£160.00	£25.00	£32,750.00
ZTT 260 V8	314	£24,519.15	£4,290.85	£28,810.00	£160.00	£25.00	£28,995.00
ZTT 260 V8 SE	314	£28,565.96	£4,999.04	£33,565.00	£160.00	£25.00	£33,750.00

Option availability	ZT & ZTT 260	ZT & ZTT 260 SE	List Price £	VAT £	Retail Price £
18" Straights Alloy wheels	■	NCO	NCO	NCO	NCO
ITS - Side head Impact Protection	□	■	148.94	26.06	175.00
Monaco part-leather seat facings	□	-	319.15	55.85	375.00
Alcantara® and leather seat facings	□	NCO	531.91	93.09	625.00
Full Black leather seat facings	□*	■	1000.00	175.00	1175.00
Passenger's seat manual height and lumbar adjustment	□*	-	170.21	29.79	200.00
Electric Front Seats	□*	■	553.19	96.81	650.00
Driver's Seat Memory	-	□	255.32	44.68	300.00
Electric Front Seats including driver's seat memory	□*	-	808.51	141.49	950.00
Electric Passenger seat height adjustment	□++	□	148.94	26.06	175.00
Heated Front Seats	□*	■	212.77	37.23	250.00
Integral Roller Blind and load safety net cassette (ZTT only)	□	■	148.94	26.06	175.00
Electric Rear Windows	□	■	255.32	44.68	300.00
Electric Rear Sunblind (ZTT only)	□	□	191.49	33.51	225.00
Headlamp powerwash and heated screen wash jets	□	■	191.49	33.51	225.00
Halogen Projector Headlamps	□	-	170.21	29.79	200.00
Premium harman kardon Hi-Fi System	□#	□	404.26	70.74	475.00
Navigator	□	-	1255.32	219.38	1,475.00
Highline Navigation (including television)	□	■	1978.72	346.28	2,325.00
Powered Glass Sunroof	□	■	468.09	81.91	550.00
Driver's Intelligence Pack **	□	■	361.70	63.30	425.00
Xenon Pack +	□	■	531.91	93.09	625.00
Powerfold door mirrors	□~	□	127.66	22.34	150.00
Chrome waist and rear number plate finishers	□	□	-	-	NCO
Rear Wing Spoiler (ZTT only)	□	NCO	234.04	40.96	275.00
Integral Roof Rails (ZTT only)	□	□	191.49	33.51	225.00
Paint Finish - Metallic / Pearlescent	□	□	382.98	67.02	450.00

□ Option ■ Standard NCO - No Cost Option - Not Available

MG ZT | ZTT 260 VITAL STATISTICS

ENGINES

	ZT 260	ZTT 260
Engine Type	4.6-litre V8	4.6-litre V8
Transmission	Manual	Manual
Maximum Power	Ps @ rpm	260 5000
Max Torque	Nm @ rpm	410 4000
Max Engine Speed	@ rpm	6000

PERFORMANCE

0-60	mph (secs)	6.2	6.3
30-50	mph in 4th (secs)	5.5	5.7
50-70	mph in 4th (secs)	5.5	5.7
Max speed	mph (lph)	155 (250)	155 (250)

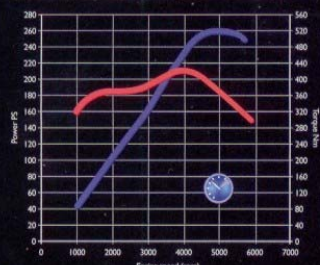
FUEL ECONOMY

Urban mpg	(l/100km)	15.8 (17.9)	15.8 (17.9)
Extra-Urban mpg	(l/100km)	27.2 (10.4)	27.2 (10.4)
Combined mpg	(l/100km)	21.5 (13.2)	21.5 (13.2)
CO ₂	g/km	314	314

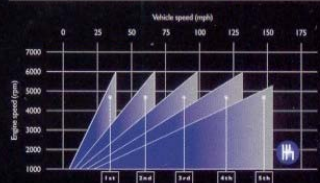
GEAR RATIOS

Maximum speed in gears		
5th mph (lph)	155 (250)	155 (250)
4th	130 (209)	130 (209)
3rd	98 (157)	98 (157)
2nd	65 (105)	65 (105)
1st	39 (62)	39 (62)

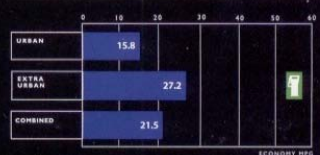
MG ZT 260 POWER CHART



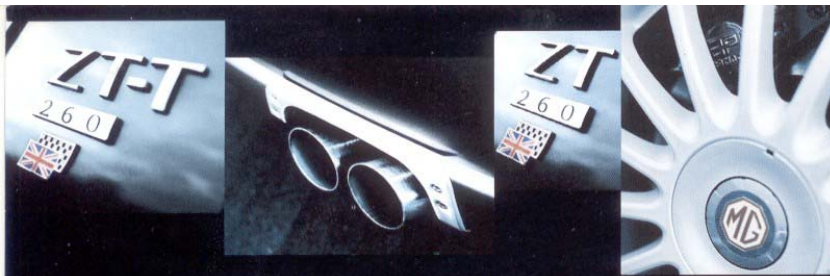
MG ZT 260 GEAR RATIOS



MG ZT 260 FUEL CHART



Manufacturer's data. All fuel economy figures are in accordance with Directive 99/100/EC. They have been calculated using the same test cycle as used for official exhaust emission classification. They cannot be compared with the previous steady speed/urban figures and are more representative of actual on-road fuel consumption. Under normal use a car's actual fuel consumption figures may differ from those achieved through the test procedure, depending on driving technique, road and traffic conditions, environmental factors, and vehicle condition.



Technical

	ZT & ZTT 260	ZT & ZTT 260 SE
4.6 litre V8 engine, rear wheel drive, limited slip differential.	■	■
H-split braking system with performance discs and callipers and Bosch 5.7 four-channel ABS.	■	■
McPherson strut front suspension with Elbach linear rate springs, Bilstein struts and large diameter anti-roll bar.	■	■
Multi-link rear suspension with 3 lateral links, light alloy trailing arm, compound spring rates, Bilstein dampers, anti-roll bar.	■	■
Power assisted linear ratio rack and pinion steering.	■	■

Wheels and Tyres

18-inch 'Straights' alloy wheels (7.5J) with 225/45 R18 tyres.	■	□
18-inch 'Apex' alloy wheels (7.5J) with 225/45 R18 tyres.	■	■
Instant Tyre Repair system (ITR).	■	■

Safety

Four airbags, five adjustable head restraints.	■	■
Front side head impact protection (ITIS).	□	■
Door side intrusion beams, rear childproof locks.	■	■

Locks and Security

Remote central door locking, superlocking, internal master locking switch.	■	■
Perimeter and volumetric alarm system with battery back-up, visible second VIN label.	■	■

Heating and Ventilation

Automatic temperature control air conditioning.	■	■
Odour filter.	□	□

Interior Trim and Fittings

'Matrix' fabric seat inserts.	■	■
'Monaco' part-leather seat facings.	□	■
Alcantara® and leather seat facings.	□	□
Full black leather seat facings.	■	■
Leather rimmed steering wheel, leather/alloy gear knob, perforated leather handbrake grip.	■	■
Front centre armrest with storage compartment.	■	■
Folding rear centre armrest.	■	■
Auxiliary power socket; cup holder.	■	■
Driver's seat lumbar adjustment.	■	■
Manual driver's seat height adjustment.	■	■
Passenger's seat manual lumbar adjustment.	■	■
Passenger's seat manual height and lumbar adjustment.	□*	■
Electric front seats (driver's: fore-aft, rake, height and tilt; passenger's: fore-aft and rake. Both have manual lumbar adjustment).	□*	■
Driver's seat memory: Passenger's electric height and tilt adjustment.	□#	□
Heated front seats.	□*	■

	ZT & ZTT 260	ZT & ZTT 260 SE
One-piece folding rear seat with through-load facility and armrest storage compartment (ZT only).	■	■
Split folding rear seat with through-load facility (ZT-T only).	■	■
Illuminated underfloor loadspace compartment (ZT-T only).	■	■
Integral roller blind loadspace cover (ZT-T only).	■	■
Integral roller blind and adjustable load safety net cassette (ZT-T only).	□	■

* These options require Monaco, Alcantara® or leather seats.

These (separate) options require electric front seats.

Electrical features

Electric front windows and electric/heated door mirrors.	■	■
Electric rear windows.	□	■
Electric rear sunblind (saloon only).	□	□
Powerfold door mirrors.	□	□
Front centre dome lamp and directional lamp for each seat.	■	■
Courtesy light 'wake-up' and delayed switch-off.	■	■
'Lights-on' warning chime.	■	■
Twin headlamps with parking lights, auto return-to-dip and pathway illumination facility.	■	■
Headlamp powerwash and heated screen washer jets.	□	■
Halogen projector headlamps.	□	■
Xenon gas discharge headlamps.	□	■
Front fog lamps, twin rear fog guard lamps and reversing lamps.	■	■
Rear wash-wipe with intermittent and auto reverse operation (ZT-T only).	■	■

Instruments and controls

Tilt and telescopic steering column adjustment.	■	■
Comprehensive warning light display.	■	■
LCD display providing trip and total odometers, outside temperature and service interval indicator.	■	■
Panel light and switch illumination rheostat.	■	■

Audio

Steering wheel mounted remote controls, screen aerial, six speakers.	■	■
CD Tuner.	■	■
Radio cassette with boot-mounted CD autochanger.	■	■
Choice of further audio, hi-fi and satellite navigation systems.	□	□
Highline Navigation system including television, rear tweeters and highline instruments.	□	■

Body and Exterior Trim features

Deep front bumper with bright mesh grilles and body colour main grille surround with MG badge.	■	■
Front 'Z' panel' bib spoiler. Green tinted glass.	■	■
Solar controlled rear glazing.	■	■
Body colour waist finishers, sill finishers, rear spoiler (not ZT-T) and door mirrors.	■	■
Chrome waist finishers and rear number plate lower surround.	□	□
Rear wing spoiler (ZT-T only).	□	□
Integral roof rails (ZT-T only).	□	□
Powered glass sunroof with blind.	□	■
Quad exhaust with bright tailpipes and heatshields.	■	■
MG build commission plate.	■	■

Option packs

Driver's Intelligence: rear parking sensors, highline instruments with message centre and trip computer, auto-dimming rear view mirror and rain-sensing wiper system.	□	■
Xenon: Xenon gas discharge headlamps, automatic headlamp levelling, heated screen washer jets and headlamp powerwash.	□	■

■ Standard □ Option - Not Available



For exterior colours please refer to the main ZT/T-T Brochure.

- **WARRANTY:** During the first three years of ownership you'll enjoy the protection of one of the most comprehensive extended warranties in the industry. All MG models purchased from authorised MG Rover distributors in the UK are covered by a three year/60,000 mile warranty*. Included within this extended three year warranty are an array of guarantees and services designed to offer complete peace of mind motoring.
- **SERVICE INTERVALS:** 5,000 miles/12 months whichever occurs first, then every 5,000 miles/12 months thereafter.

* Made up of a 12 month unlimited mileage warranty plus MG Rover's 2nd and 3rd year 60,000 mile extended warranty subject to terms and conditions. The extended warranty is provided by MG Rover as a no cost option to purchasers of MGs from authorised UK MG Rover distributors. The extended warranty will only apply to the extent that the 12 month unlimited mileage warranty has not exceeded 60,000 miles.

Alcantara® is a registered trademark of Alcantara S.p.A.



MG Rover Group
PO Box 41
Longbridge
Birmingham
B31 2TB
www.mgcars.co.uk

© MG Rover Group Ltd 2003.

Important Notice: MG Rover Group is constantly seeking ways to improve the specification, design and production of its vehicles and alterations take place continually. Whilst every effort is made to produce up to date literature, this UK market brochure should not be regarded as an infallible guide to current specifications, nor does it constitute an offer for the sale of any particular vehicle. Distributors and Dealers are not agents of MG Rover Group and have absolutely no authority to bind MG Rover Group by any express or implied undertaking or representation. Any reference in this brochure to speed or performance should not be taken as an encouragement to drive either dangerously or at speeds in excess of the national limit. If you require any further information regarding MG Rover products or services, please contact your MG Rover Dealer, who will be pleased to assist you.

Publication number: 6095

YOUR LOCAL DEALER IS



LIFE'S TOO SHORT
NOT TO

