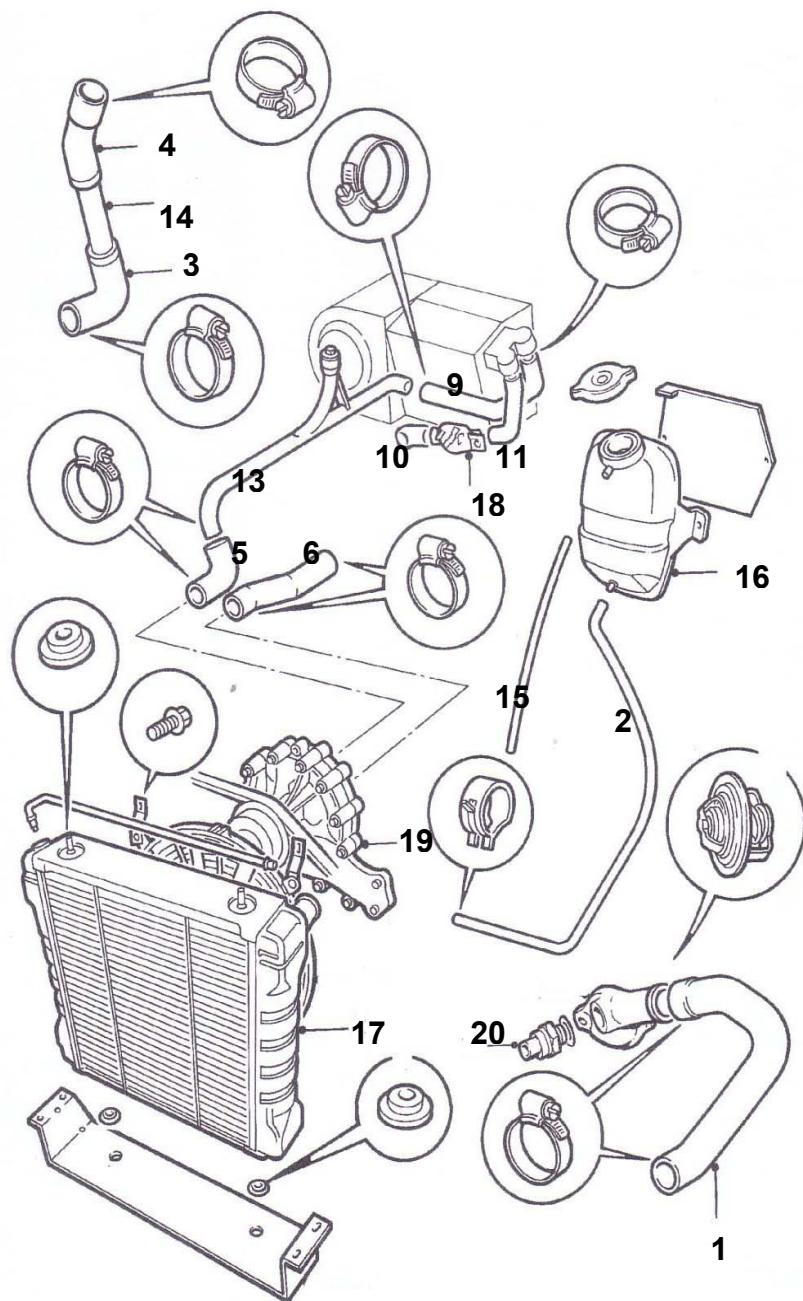


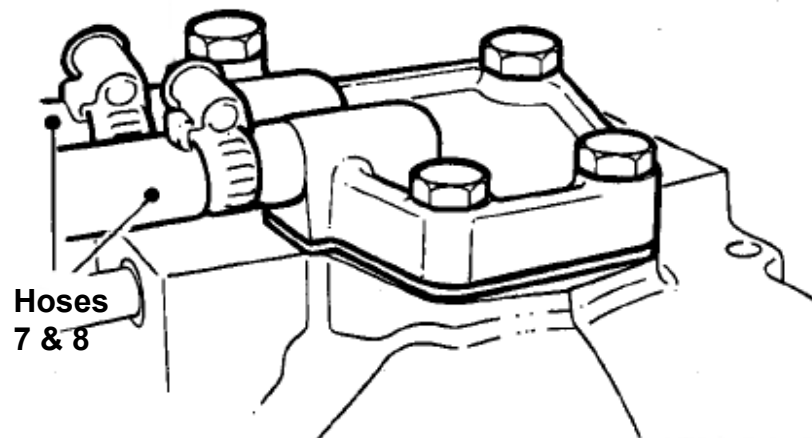
Identifying the RV8 rubber cooling hoses



- 1 Top hose GRH1324 – radiator to thermostat (20)
- 2 GRH1321 - expansion tank to radiator (17)
- 3 Bottom hose GRH1322 – radiator to connecting pipe (14)
- 4 Bottom hose GRH1323 - connecting pipe (14) to water pump (19)
- 5 Hose – water pump to steel heater rail (13)
- 6 Hose – water pump to steel coolant rail (not shown)
- 7 Hose – from plenum cover (pre-heat) to steel pipe heater rail (13)
- 8 Hose – from plenum cover (pre-heat) to inlet manifold
- 9 GRH1320 - heater return via steel pipe heater rail (13)
- 10 GRH1318 - heater feed from steel coolant rail to control valve (18)
- 11 GRH1319 - heater feed from control valve (18)
- 13 Steel heater rail
- 14 Connecting pipe ZKC5004 between the bottom hoses
- 15 Section of rubber hose - overflow from the expansion tank
Cut off excess from hose 7 and use for this as the overflow hose
- 16 Expansion tank
- 17 Radiator
- 18 Heater control valve ZKC5119
- 19 Water pump
- 20 Thermostat



Identifying the RV8 rubber cooling hoses



This is the only diagram in the RV8 Repair Manual or Parts List which shows these two coolant pipes – identified as 7 and 8 in the table above. See Fuel System, Repairs page 4 – RV8 Repair Manual AKM7153ENG



Hoses (7 and 8) with pipe above removed to show connection with plenum cover plate



Hose (7) from the plenum cover plate (lower hose in the photo above)



Identifying the RV8 rubber cooling hoses



Hose (7) from the plenum cover connecting to the steel pipe/heater rail (13)

Photos: Steve Newton (Clive Wheatley mgv8 parts)

Replacement cooling hoses and connecting pipe from Clive Wheatley – see them at <http://mgv8.homestead.com/RV8.html>



Metal connecting pipe ZKC5004 between the bottom hoses. This part is shown as NLA elsewhere but Clive Wheatley has had the part made and it is now available for RV8 enthusiasts.



Set of replacement silicone water hoses for the RV8.

Replacement top and bottom hoses in either rubber or silicone.

Clive Wheatley mgv8parts

Reimports RV8s - call to check out his present stock of RV8s. He also provides full spares and servicing facilities for the RV8 model. Provides full servicing, mechanical rebuilds and V8 conversions. Supplies V8 parts for maintaining MGBGT V8s including gearbox laygears for the MGBGT V8 and rocker covers and parts needed for MGBV8 conversions. Clive also services MGBV8s and MG RV8s and is a convenient specialist for members in the West Midlands. Clive has recently moved his operation from Wolverhampton to freshly refurbished workshops in the Shropshire countryside. The new premises are in specially converted outbuildings adjacent to a country house just 7 miles slightly west of Wolverhampton, near the village of Worfield off the A454.

Clive Wheatley mgv8parts
High Grosvenor Workshops
Worfield
Bridgnorth
Shropshire WV15 5PN
Tel: 01746 710810
Fax: 01746 710999
sales@mgv8parts.com
www.mgv8parts.com

[See Clive Wheatley's spares offers](#)

[See Clive Wheatley's new workshops](#)

Clive joins the Heritage Approved Network. [More](#)

www.v8register.net/lifeline.htm#clivev
www.mgv8parts.com