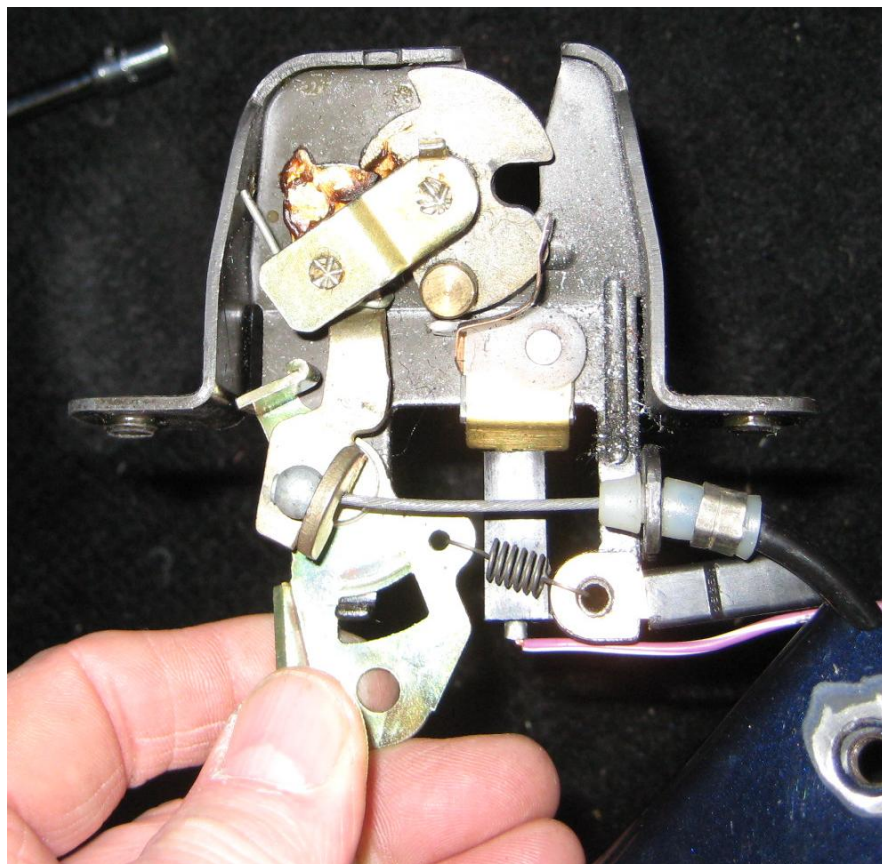


RV8 boot lid lock and boot light switch



Godfrey Dennis has some useful pictures of the lock on the boot lid on his RV8 which he feels "should help to clarify the metal tab which acts as the switch mechanism for the interior boot lamp, particularly No. 013 (**top right** and enlarged to the right) which shows the position when the boot lid is open, and No. 014 (**top left** and enlarged to the left) the position when the boot lid is closed.

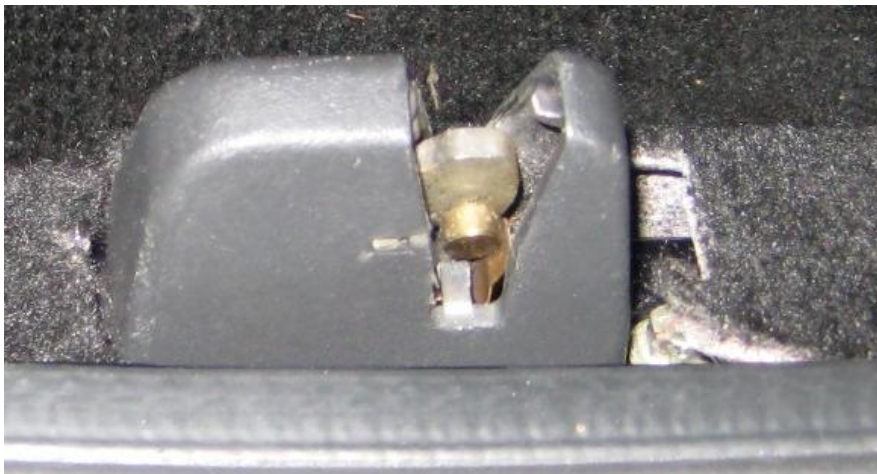
You can see a small round spindle in both pictures, and indeed in all of the set, but looking at Nos. 13 and 14 you can see in No 13 (right) where the metal tab contacts the spindle when the boot is open to complete the circuit and put the **light on** and in 14 (left) where it separates from the spindle, when the lid is closed, to break the circuit and keep the **light off.**"



RV8 boot lid lock and boot light switch



Boot lid is open - Photo 9 shows the position when the boot lid is open - you can see the tab in contact with the spindle, and therefore the interior light is on.



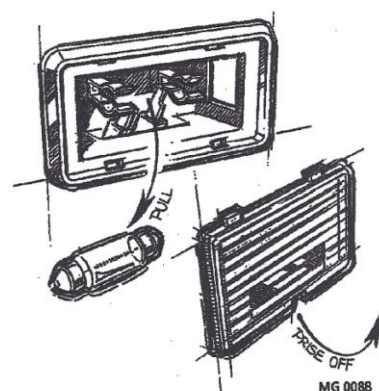
Boot lid is closed - Photo 10 shows the position when the lid is closed – the tab is not in contact with the spindle, the circuit is broken and the interior light goes off.

These photos from Godfrey Dennis show the location of the combined boot lock and luggage compartment switch

You can see from the photos above, that it is possible to adjust the tab from the top by careful use of a screwdriver, although I think it's better to remove the unit fully for adjustment. It's not a big job.

The luggage compartment light is mounted on the bulkhead between the boot and the cockpit.

RV8 boot lid lock and boot light switch



RV8 luggage compartment light
Source: RV8 Owner's Handbook
AKM7144ENG, page 116

RV8 boot lid lock and boot light switch

During a recent thread on the V8 Bulletin Board, Godfrey Dennis was able to solve two problems: first solving a problem with the switch forming part of the boot lock and second solving a missing tell-tale lamp on the dashboard switch for the boot lock. (Aug 12)

Godfrey Dennis started a thread on the V8 Bulletin Board saying "Now I'm not very good on electrics but I've owned my RV8 for some 12 months and noticed that the interior boot lamp never worked since I purchase of the car. So I removed the plastic unit and to my surprise it was disconnected. I replaced the bulb and reconnected the wiring lead and lo and behold it worked. Then 24 hours later I went to the Northern Nationals event at Pateley Bridge, drove home and parked the car in the garage. I wanted to use the car today (four days later) and the battery is flat. I now suspect the lamp unit was disconnected by a previous owner because there was a problem. When closed, does the boot lid operate a switch which cancels the power to the boot lamp, and if so where is it? I can't find it but I would like to solve the problem. By the way, the battery is quite new and it is a coincidence that it should discharge just when I get the previously disconnected boot lamp was adjusted to work.

Stuart Ratcliff in Sydney responded "the switch for the boot light is part of the boot lock located on the rear beaver panel. You will find a contact arm that does the switching when the lid is opened. If the car is to be left at a show or in a garage for a long period, a slip of paper between the contacts will turn the light off and avoid draining the battery. We have had cars in the workshop here that have been fitted with a cut out switch on the rear carpet board to do this very job.

Simon Austin in Canada noted "I had a similar problem with #590's lamp. I took the trim apart in the area of the switch, removed it and figured out how it works. Memory isn't what it used to be but fortunately I did take photos of the process." Simon sent over some photos with a note saying "what might be happening with

your switch is this metal tab isn't being moved when the lid is closed thus keeping the lamp illuminated and draining your battery. "

Peter Garton felt "the question arises as to how one can see whether the lamp goes off when you lower the boot lid? One way would be to put your camera in the boot with the flash off but on timer facing your lamp. Close the lid and wait, in trepidation and expectation, and then open up again after the said time lapse. You should then be able to see if the light remained on. However, having said that, I think the suggestions made by Stuart and Simon will find the cause of your problem Godfrey.

Stuart Ratcliff noted "an even easier way of telling if the lamp is on is to look at the tell tale light on the dashboard switch as it lights up when the boot light is on, even if the ignition is off. "

Peter Garton said "I'll have to take a look. Since I never leave the boot open I wasn't aware that the dashboard switch on the RV8 actually lit up."

Godfrey Dennis returned after examining his car saying "I have established quite clearly that the interior boot light does stay on when I close the boot lid, so that to me is the reason why the battery was discharged. I have examined the boot locking mechanism from the top and can see wiring going into it, but I cannot see what Stuart describes as the contact arm. I'm going to remove the unit early next week to examine it properly and I'm sure from the information you have given me, I'll be able to solve the problem. Thank you all for your help."

Peter Garton reported he had got out his RV8 yesterday and said "Stuart, you were quite correct the light in the dashboard switch does come on even with the ignition off when one opens the boot. I assume that it won't work when the bulb has gone. If Godfrey's boot light did not switch off, I'm not quite clear whether the dash light in his case would remain on with the boot closed, although I fully understand the thread from Simon which looks into the mechanism itself. "

Godfrey Dennis replied "you might find this odd, but I've never really noticed the red light above the boot lid switch on the dashboard. I don't think I've ever used the boot lid switch to open the boot as I've always done it by key. However, the boot lid switch works perfectly. Whilst I have not as yet taken the boot lock mechanism off to examine it, my battery is re-charged. I switched the ignition on, and operated the boot light switch on the dash board to open the boot. No red light, so clearly there's another bulb to replace. Had that red light stayed on previously, then I would have course known there was a problem. At the moment therefore I can't answer your question - Does the red light stay on if the boot interior light remains on? Personally, I would have thought the red light would stay on only in the event of the boot lid being slightly or fully open.

Peter Garton clarified the light saying "Actually Godfrey you could well have slightly misunderstood what we meant by the light on the dashboard. It isn't red and is incorporated within the switch itself and the white light is a sort of slit. It

RV8 boot lid lock and boot light switch

goes on when you open the boot irrespective whether you switch it on or have the ignition on. It opens the boot remotely, but only when you have the ignition on! The red light is your anti theft warning which blinks when you activate it."

Godfrey Dennis added "Peter, you are quite right. I thought the red light was the light to indicate whether or not the boot lid was open. I have the RV8 Repair Manual which is pretty comprehensive, but it does not show the red light above the boot release switch on the dashboard. I wonder why? Simon has sent me some great pictures of the boot release mechanism, and I will be examining mine in the next few days. So I'll report back with my findings, and hopefully I'll resolve the problem."

Simon Austin responded "I just had a look in the service manual and couldn't find any reference to the light above the boot release switch. The Owner's Handbook does show the light on page 10. As mentioned, it is the anti-theft light. I haven't tested the dash switch light yet but my guess is this particular light illuminates to tell the driver that the boot lid is open, not that the boot lamp is lit. I'll test that theory by removing the bulb and see if the dash switch light still illuminates."

Bob Owen added "I'm not familiar with RV8 wiring but I would think that production economy would dictate a single sensor on the boot lid which activated when it opened so causing the boot interior light AND the dashboard switch warning light to illuminate. On that basis I would expect that a faulty sensor mechanism would cause the warning light to also be on if it left the boot light on with the lid closed."

Godfrey Dennis examined his boot lock and reported that with the benefit of Simon's pictures and other members' comments, "I removed the boot locking mechanism this morning, although strictly speaking I can see you don't have to. The metal tab switch mechanism is quite primitive, and with the boot latch in either the open or closed position, the metal tab was still making contact with the spindle and completing the circuit. An easy adjustment with the screwdriver did the trick and all is well now. I ran a digi camera in video mode in the boot 2 or 3 times to check that the interior boot light did go out when the boot lid was closed. I also removed the boot release switch on the dashboard because there was no sign of a light within the switch, as Stuart & Peter had mentioned. On close examination I could not see a bulb or diode, and I have come to the conclusion that there is no bulb in my switch. It seemingly cannot be dismantled, without breaking something, so I'm puzzled about the light on the switch. Could be that on later cars there was no light? The switch operates the boot release solenoid perfectly. In any case I'm not too bothered about the dashboard switch as I don't use it. Many thanks for all your help."

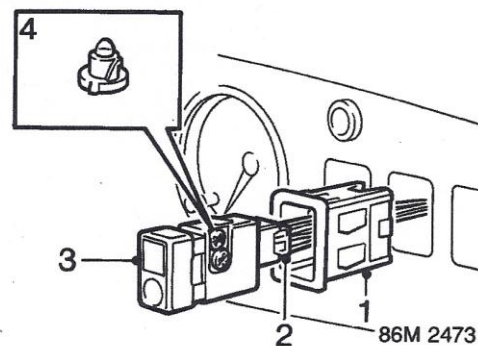
Peter Garton added that "now you appear to have now solved your problem, Godfrey, a thought just occurred to me. If the predecessor owner disconnected the boot light, did he also change the switch in his search for a solution? As you say, this switch is quite simple really but it does have a light within it. I wonder if the tiny light bulb has been removed from inside the switch?"

Godfrey Dennis replied "yes Peter - I've had the switch out again, and indeed there is a tiny bulb. Victor Smith sent me a picture of the switch from the RV8 Repair Manual and it all became clear. The bulb has gone so I'll try and source a new one from B&G hopefully." See **RV8NOTE368** subsequently contributed by Godfrey Dennis which shows what bulb is needed, where to get it and how to fit it to repair a faulty RV8 dashboard boot release switch bulb.

SWITCH AND BULB

Service Repair No. 86.45.29

Remove



1. Ease switch holder from fascia panel.

Note: RH switches can be pressed out by reaching behind panel.

2. Disconnect multiplug from switch.

Do not carry out further dismantling if component is removed for access only

3. Remove switch from holder – not Hazard switch.
4. Remove bulb(s) from switch.

Refit

1. Fit new bulb(s) to switch.
2. Fit switch to holder – not Hazard switch.
3. Connect multiplug to switch.
4. Align and press switch holder into fascia panel.

Source: RV8 Repair Manual AKM7154ENG, Electrical, Repairs, page 2

Simon Austin noted "glad to hear you have it sorted out. As you say, that metal tab is a bit primitive but I suppose simpler is better...especially when it comes to cost. I put together an RV8 Workshop Note (see below) with the same photos I forwarded to you. Victor has them so hopefully we'll see them up on the Register shortly.

RV8 boot lid lock and boot light switch

Faulty boot lamp switch

Simon Austin provided an illustrated note on the fault he discovered from an examination of the boot lock and switch.



Metal tab shown was bent out of position causing the faulty boot light. (Simon Austin)

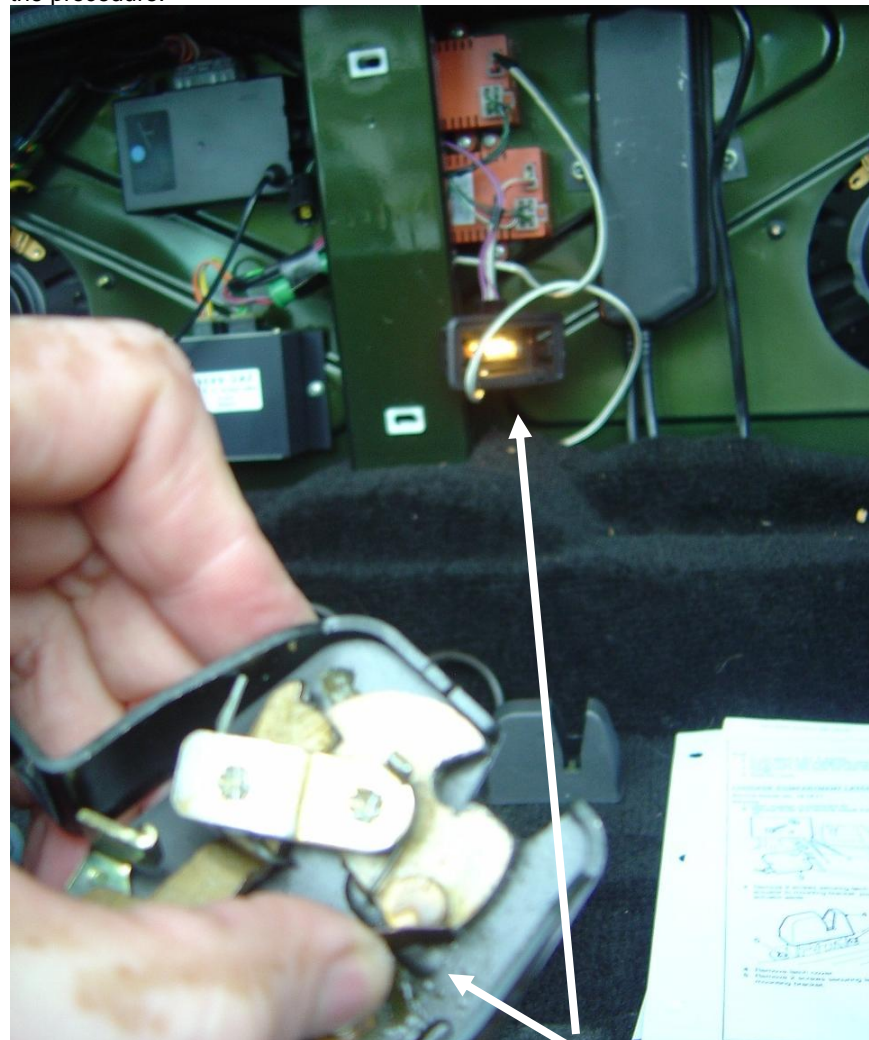
Testing the boot light switch

In the photo on the opposite column - for testing purposes, pressing the metal tab against the locking mechanism grounds the circuit and the lamp illuminates. The two photos on page 1 of this note compare the latch in the open and closed positions. On the latch, there is a small circular metal "knob" that contacts the ground tab. This knob rotates with the latch.

In the V8 Bulletin Board thread the query was why does the boot lamp fail to extinguish with the boot lid closed? Simon felt the problem was with the metal tab being bent out of position enough that it contacts the latch mechanism continuously, regardless of lid open or closed – see the photo above. Perhaps it just needs to be bent back to its original position? I'd think the chances of the latch mechanism being at fault are slim as it's a robust piece of equipment whereas the metal tab is rather fragile by comparison.

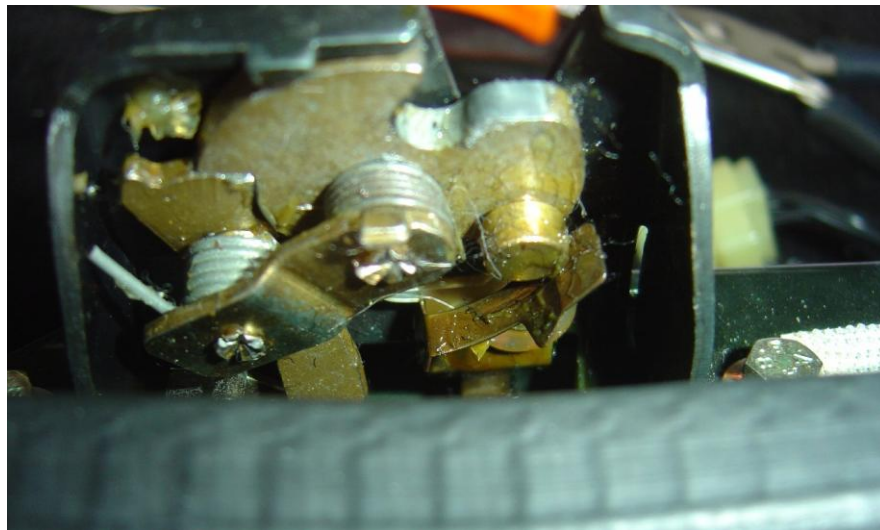
The good news is that the metal tab can be adjusted without removing the latch from the vehicle. If you look down into the mechanism, the tab should be visible and moving the latch should show how the complete system operates. One can use a screwdriver to replicate the boot lid's metal bracket engaging the latch

mechanism. With the lid open, force the latch into the closed position with the screwdriver and confirm how the metal ground tab contacts the knob on the latch. Adjust as required. To release the latch, just insert key as normal and the latch will spring to the open position. I had to remove the latch mechanism in order to determine how the system operated but as mentioned, one should be able to adjust the metal tab without removal of the mechanism. If that doesn't work, removal may be necessary and the RV8 Repair Manual is very good at describing the procedure.

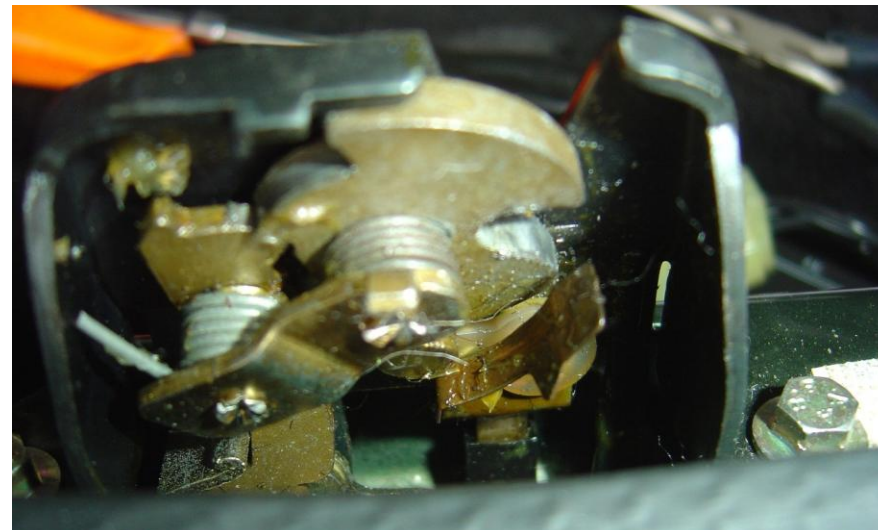


When the metal tab is pressed against the latch "knob", the circuit is grounded and the boot light comes on. (Simon Austin)

RV8 boot lid lock and boot light switch



Latch in the open position – the metal strip contacts the knob to ground the lamp circuit, so the lamp is on. (Simon Austin)



Latch in the closed position – the latch knob moves away from the metal strip and then the circuit is open and the lamp is off. (Simon Austin)

Problem where the boot lamp fails to extinguish with the boot lid closed

Simon Austin says “my suspicions lie with the metal tab being bent out of position enough that it contacts the latch mechanism continuously, regardless of whether the boot lid is open or closed. I feel it just needs to be bent back to its original position. I'd think the chances of the latch mechanism being at fault are slim as it's a robust piece of equipment whereas the metal tab is rather fragile by comparison.

The good news is that the metal tab can be adjusted without removing the latch from the vehicle. If you look down into the mechanism, the tab should be visible and moving the latch should show how the complete system operates. One can use a screwdriver to replicate the boot lid's metal bracket engaging the latch mechanism. With the lid open, force the latch into the closed position with the screwdriver and confirm how the metal ground tab contacts the knob on the latch. Adjust as required. To release the latch, just insert key as normal and the latch will spring to the open position.

In the photos I have provided, I had to remove the latch mechanism in order to determine how the system operated but as mentioned, one should be able to adjust the metal tab without removal of the mechanism. If that doesn't work, removal may be necessary and the service manual is very good at describing the procedure.