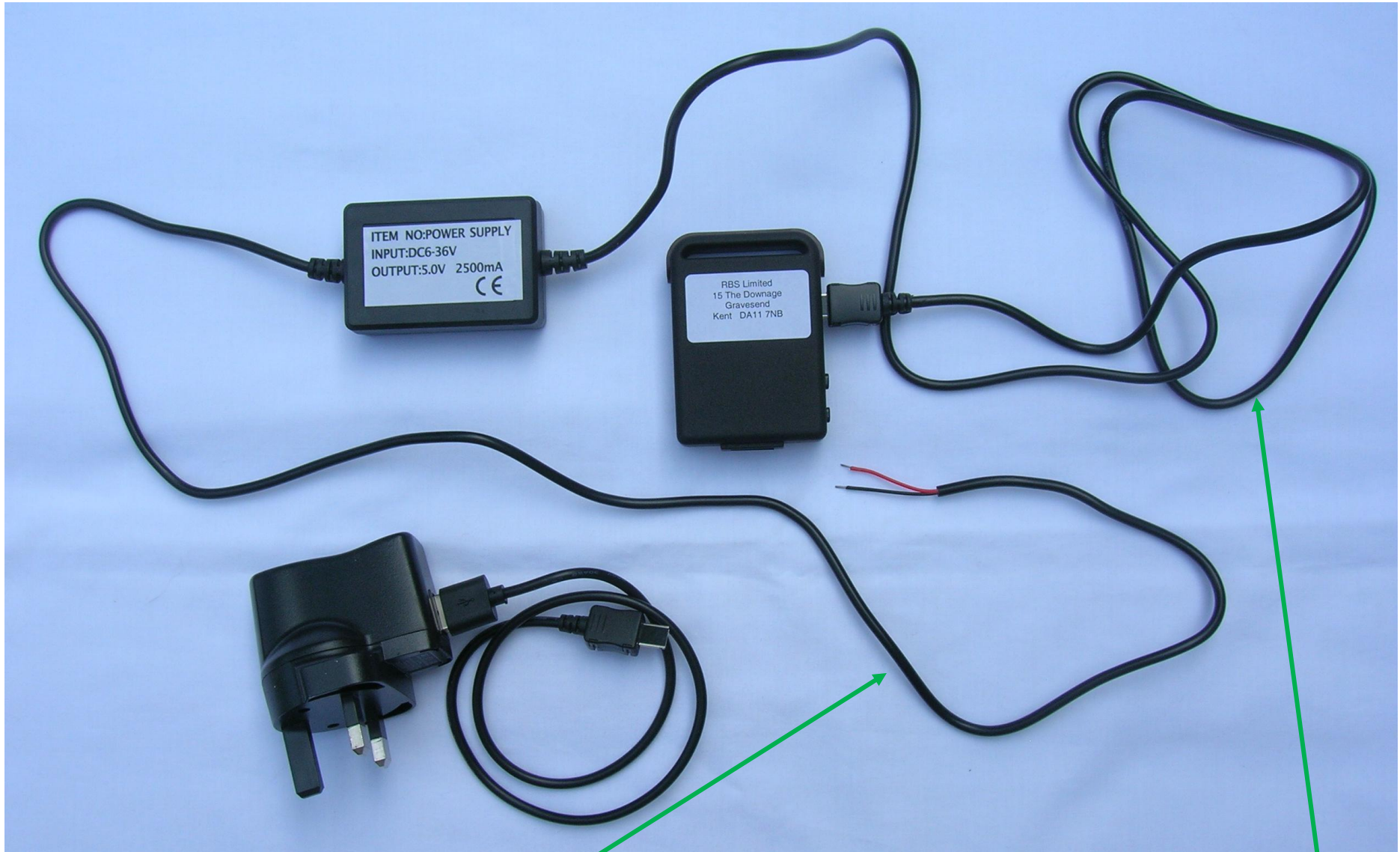


## CHIPnTRAC GPS tracker - contents of the kit and size of power supply and tracker and lengths of leads



**Live feed cable** from the power supply unit to bare ends = 27" (69cm)    **Cable from power supply unit** to the USB connector to the tracker = 42.5" (108cm)

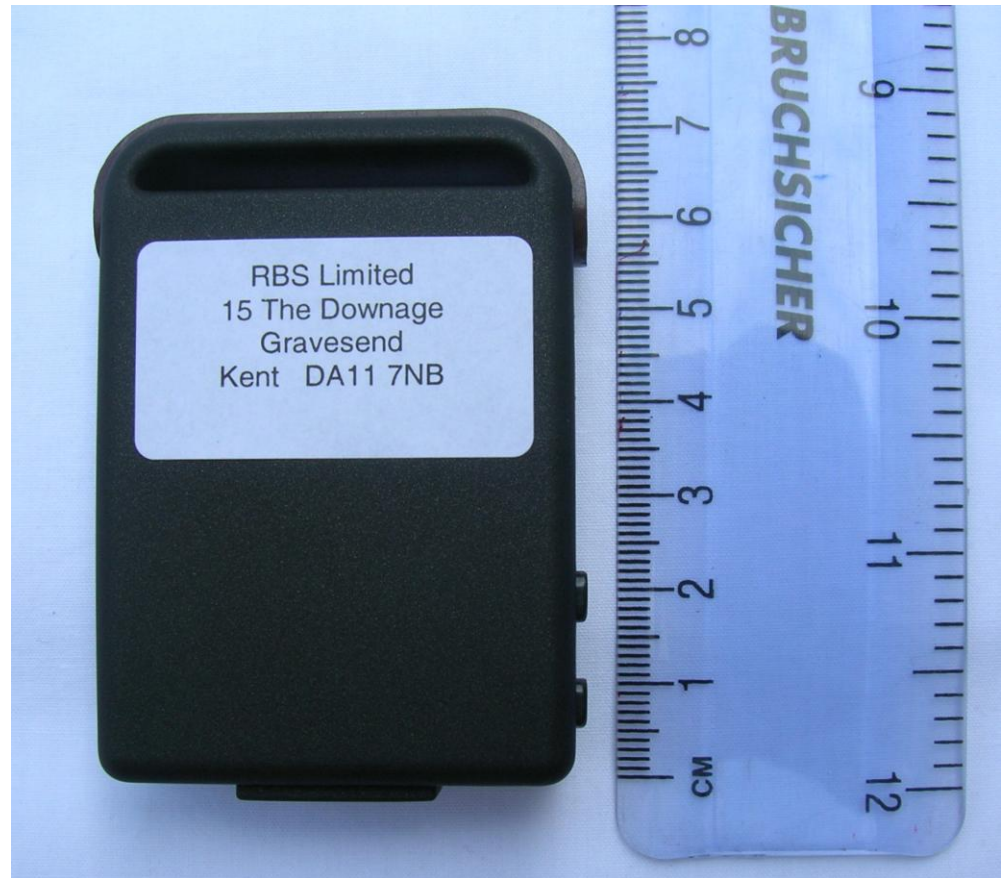
**Power supply unit:** 60mm (2.25") H x 40mm (1.57") W x 20mm (0.79") D

**GPS tracker:** 59mm (2.32") H x 48mm (1.90") W x 16mm (0.63") D

CHIPnTRAC GPS tracker - contents of the kit and size of power supply and tracker and lengths of leads



Power supply unit



CHIPnTRAC GPS Tracker