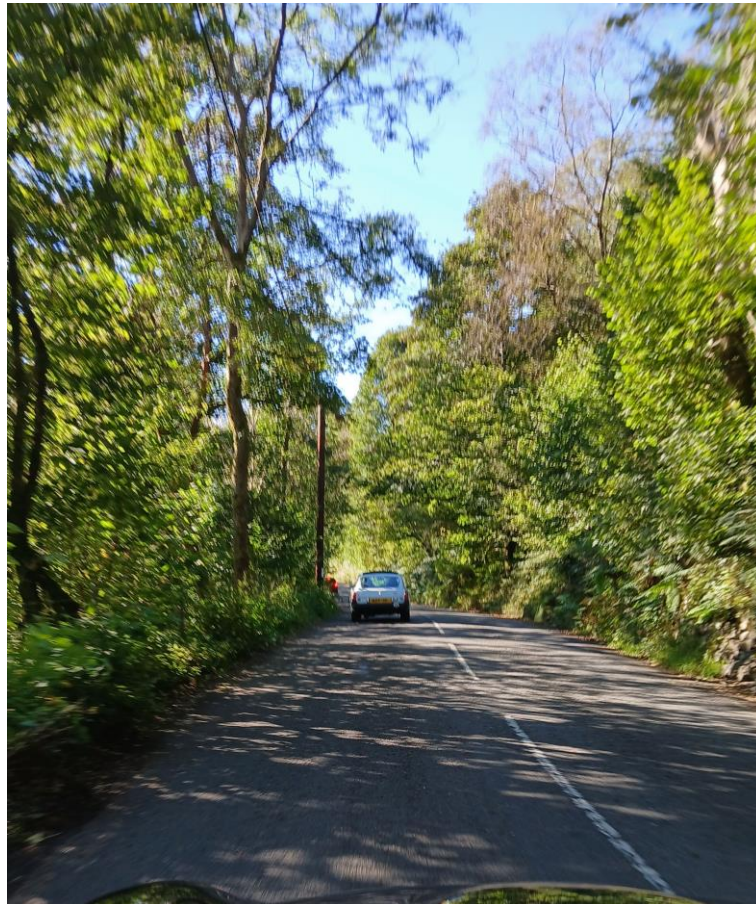


## V8 North Lakes Tour 2024



Passing Ulswater on the way to the Kirkstone Pass.



View of Skiddaw from Ashness Bridge.





Going towards Buttermere on Honister Pass.



Watendlath Tarn - tis is fed from Blea Tarn and flows down to Derwent Water under Ashness Bridge.

Photo credit: Debbie Brading