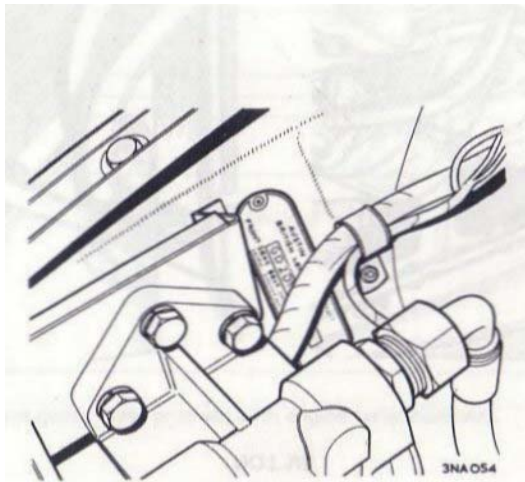
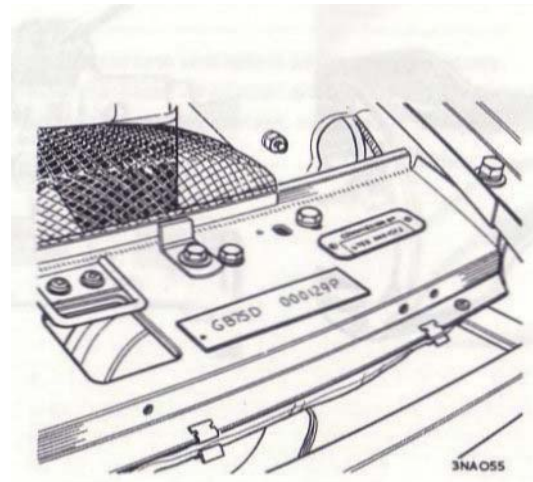


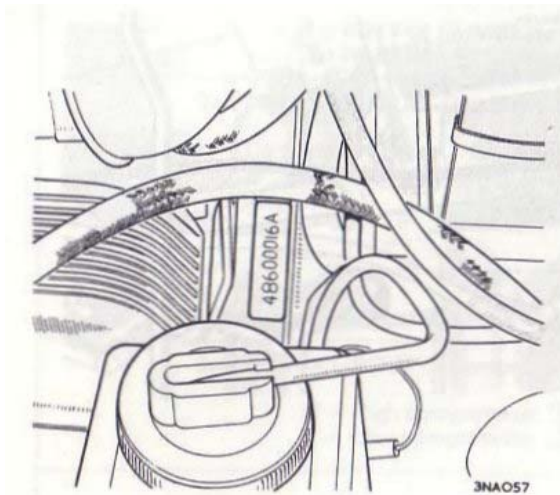
## MGBGTV8 – location of unit numbers



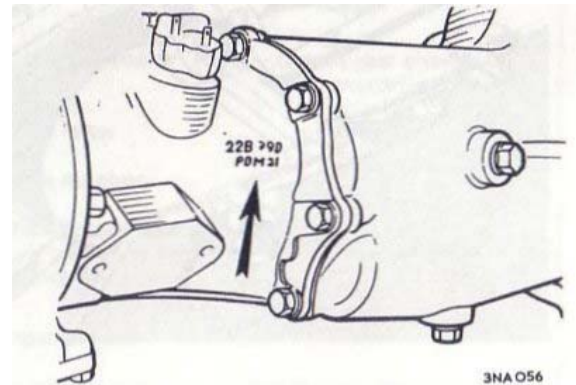
The Car Number is stamped on a plate secured to the RH wing valance adjacent to the filter



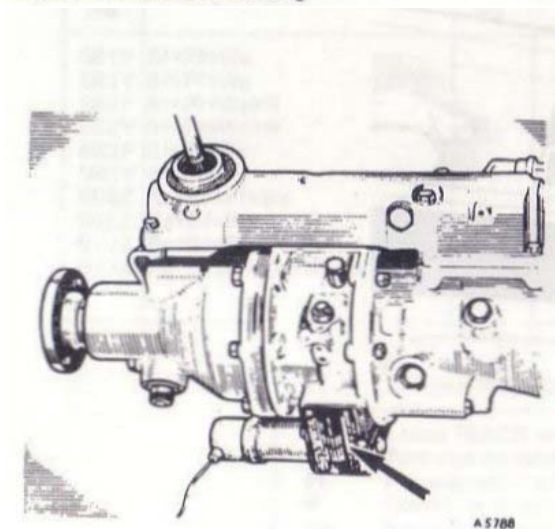
The Body and Commission Numbers are stamped on plates secured to the bonnet lock platform



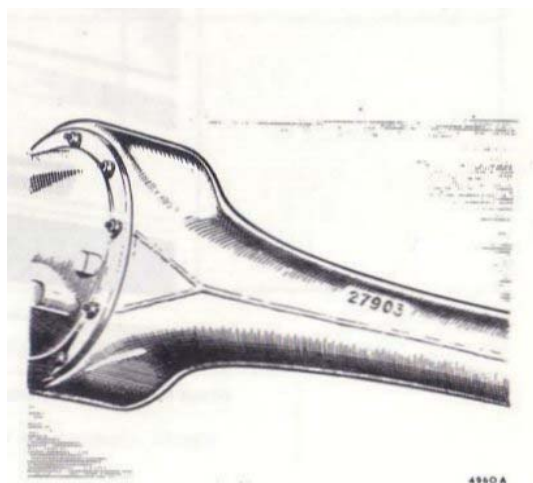
The Engine Number is stamped on a plate secured to the left-hand side at the rear of the cylinder block, adjacent to the bell housing



The Gearbox Number is stamped on top of the gearbox casing



The Overdrive Unit Number is stamped on the solenoid side cover on the right-hand side of the unit



The Rear Axle Number is stamped on the front of the axle tube on the left-hand side adjacent to the spring seat