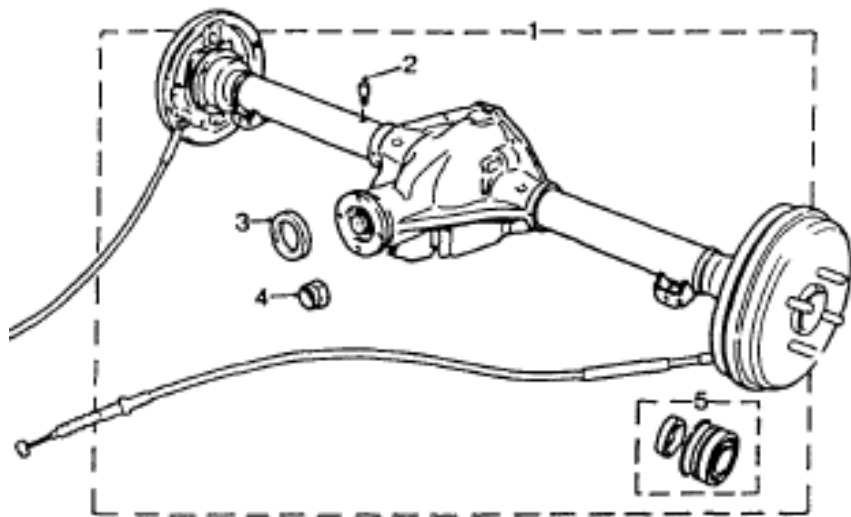


RV8 back axle with Quaife Salisbury hypoid gear drive torque biasing, semi-floating 3.31:1 ratio

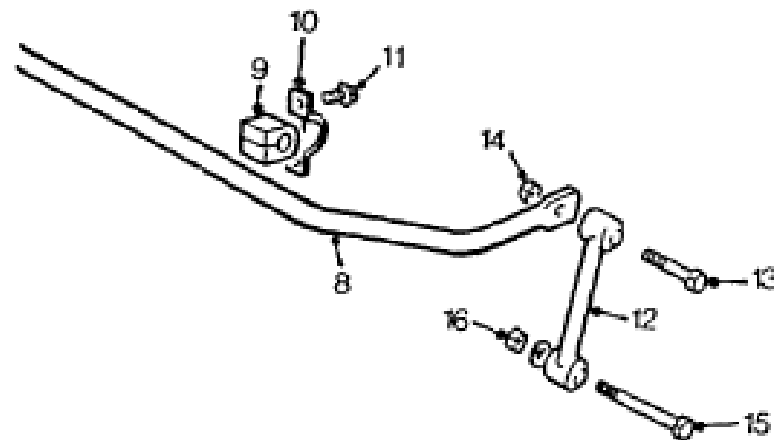
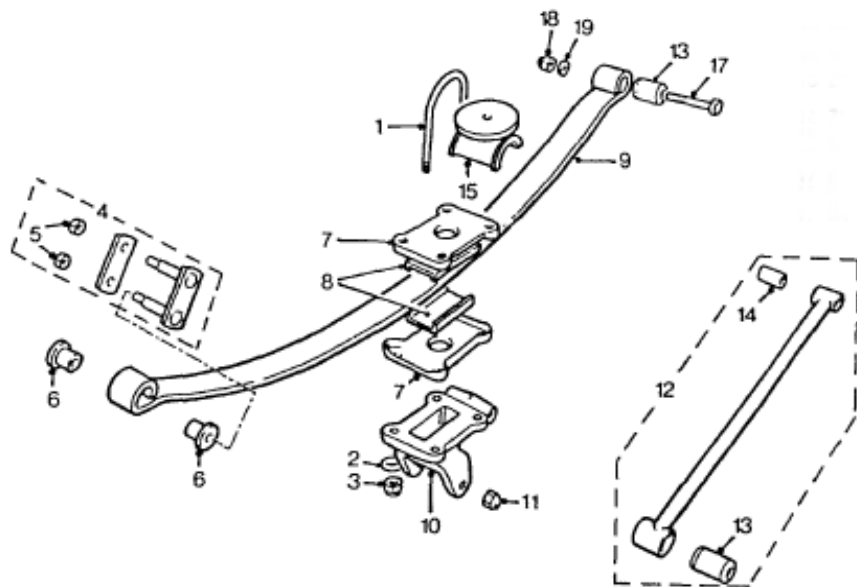


RV8 back axle with the standard Quaife Salisbury hypoid gear drive, torque biasing, semi-floating, 3.31:1 ratio. The axle has covered 31,000 recorded miles from new, a documented full service history with a recent oil change, no leaks and no known faults. The sale is due purely to the purchase of a Hoyle IRS system for which I will need Ford back axle parts. Included with the sale is the complete set of shackles, springs, anti tramp bars, anti roll bar and handbrake cable.

All parts newly painted with POR-15 as some had minor surface rust showing at the time of their removal from the RV8. With the higher ratio than the standard MGB it would suit GTV8 as well as a V8 or V6 MGB Roadster conversions as the RV8/MGB axles are interchangeable.

Brown and Gammons price for a rear axle alone is £1,762.50. My price is **£1,050** complete.

Contact Angus Munro on 01603 477296 or angus.munro@ntlworld.com Location: Norfolk



Parts diagrams from the RV8 Parts Manual