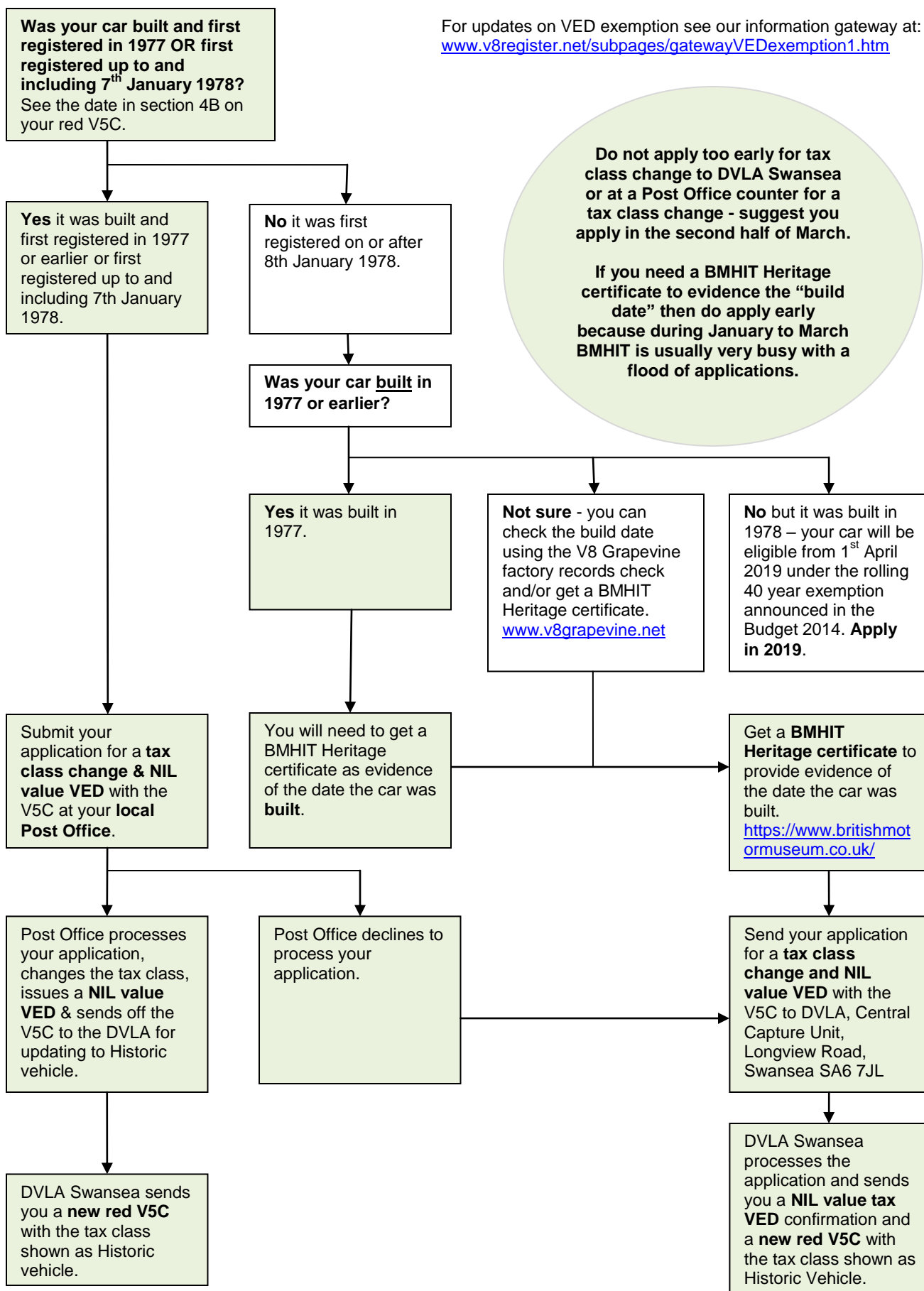


Applying for a tax class change to a Historic Vehicle and for a NIL value tax disc

For updates on VED exemption see our information gateway at:
www.v8register.net/subpages/gatewayVEDexemption1.htm



Do not apply too early for tax class change to DVLA Swansea or at a Post Office counter for a tax class change - suggest you apply in the second half of March.

If you need a BMHIT Heritage certificate to evidence the “build date” then do apply early because during January to March BMHIT is usually very busy with a flood of applications.